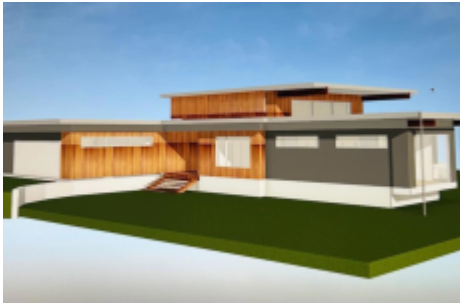


A Schechter/NewPhire creation-Net Zero

4637 Array Drive, Chapel Hill, NC 27516

35.957606090675505, -79.18538821349075



Welcome to The Array House, a fearless architectural masterpiece born from a vision that defies the suburban status quo. This brilliant one-level Modernist Net Zero Energy Home was designed and built by Chapel Hill's Dream Team, Arielle Schechter, Forbes 2025 "200 Best Residential Architects in the US" and NewPhire Building Company, the Triangle's premiere high performance home builder. Together, their business ethics, integrity and commitment to quality and design set them apart in their field. This highly energy efficient home was designed & built for the person looking for true luxury in a quiet & beautiful natural surrounding in a neighborhood where all of the houses are net-zero energy. The home is being finished but the sellers are moving to be close to family. This is your opportunity to get this home before it is done. The renderings are an accurate representation of the finish details in the home. The houses in Array, NC's first 100% net-zero energy neighborhood, are all custom homes and all of the lots are sold. This coupled with rising building costs and removal of tax credits, make this a very special opportunity. Set on a wooded 1.52-acre lot, The Array House is a bold study in privacy & light. Its modernist lines are uncompromisingly accented with the tactile warmth of fluted pine and cypress, inviting you to live in a seamless dialogue with nature. Step inside, and the narrative shifts entirely. This home is defined by walls of glass—not just floor-to-ceiling, but a staggering two-tiered cascade of clerestory windows that flood the interior with light, while meticulously crafted wood screens add a warm, artistic layer of architectural interest. The House: A Fusion of Design & Performance This is a home that scoffs at utility bills. A high-performance, Net Zero Energy sanctuary, The Array House is engineered to produce more energy than it consumes, achieving a projected HERs Score of -18. With an installed 36-panel solar array & two FranklinWH batteries for 30kWh of storage (which qualify for the 30% solar tax credit), this home offers more than just efficiency—it is designed for maximum comfort while achieving energy independence. The structural steel and triple-glazed windows are not just stunning; their timely construction avoided tariffs, representing a rare moment of genius in the building process. The home's exterior is a sophisticated interplay of Thermory fluted pine, fiber cement, and cypress, set against a stunning backdrop of Pewter Green. Enjoy the large terrace off the family room & relax on the deck after a workout off the bonus room. The house is situated such that a pool can go in front of the terrace. Spanning 2,800 square feet, the open-concept design is grounded by 3/4 " white oak hardwood floors and anchored by an uncompromisingly bold, natural oak accent wall in the family room. A chef's kitchen features a Sub-Zero refrigerator and a Bosch 36" induction cooktop, all topped with elegant Quartz. This one-level home is a triumph of deliberate, solid-core doors, sleek finishes, &

soaring windows that blur the lines between inside & out.The home sits in the Array neighborhood that mirrors its philosophy. Array is a community for those who prefer living surrounded by nature. Fifty-six percent of the neighborhood is held in open space, preserving a lush canopy of trees, a stocked pond with two docks, a community gathering place, 2.5 miles of tranquil walking trails, & a community garden. The open space is in a Perpetual Conservation Easement & will be protected forever. This is a place where neighbors value privacy, community, & the timeless beauty of their natural surroundings while doing their part to live with a reduced carbon footprint.The Array House is for a buyer who doesn't just want a home, but a living, breathing work of art. A statement of uncompromising quality, conscious living, & quiet prowess.AGENT'S LISTINGARCHITECT'S INFOBUILDER'S INFO

Overview

Market Status:Active	Sale or Rent:For Sale	Initial list price (subject to change):\$2269000
Rent price:\$	Land area:1.5acre	Living area:2800ft2
Bedrooms:3	Full Bathrooms:3	Half Bathrooms:
Architect:Arielle Schechter	Builder:Newphire Building	Year Built:2026

Amenities

- ✔ Bonus Room
- ✔ Garage
- ✔ Vaulted Ceiling
- ✔ Eco-Friendly

Agent Details

NC Modernist Houses For Sale/Rent

jodi@realestateexperts.net - jodi@realestateexperts.net